
Center Bonded Mounts

Installation Guide

Specifications

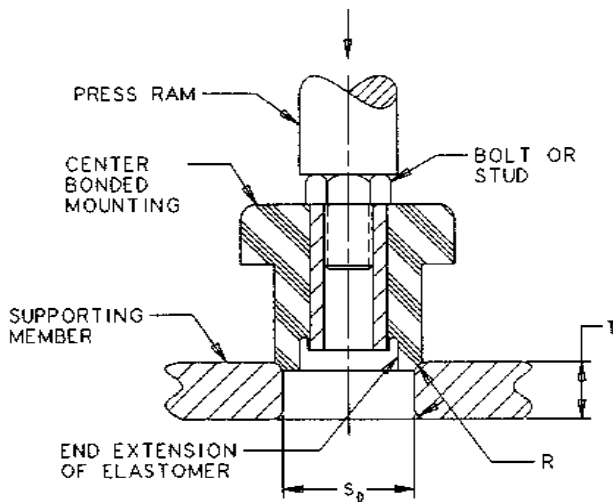
Materials: The elastomers are high quality natural rubber which meet Lord specifications (available upon request).

The elastomer-to-metal bonds are stronger than the elastomer.

Environmental: For applications in severe oil environments, contact Lord Corporation. Based on extensive experience, center bonded mounts have been designed to operate in normal fluid, temperature and other environmental conditions such as found in the engine compartment of on- and off-highway applications.

Testing/Quality Control: Drawings of each part specify the load deflection tests which are performed to assure consistency of spring rate characteristics.

Testing/Performance: Extensive laboratory fatigue testing has been performed under simulated service conditions.



Installation

Installation is simple, consisting of four steps:

1. Both mount and socket should be lightly lubricated with rubber lubricant or water. A special rubber lubricant, P-80 Emulsion, is available from International Products Corporation, P.O. Box 70, Burlington, NJ 08016-0070, Phone: (609) 386-8770, FAX: (609) 386-8438.
2. Insert part in socket and rotate part by hand while applying axial force until partially positioned. Insert assembly driver in the metal inner member of the mount. Care should be taken that the driving device does not overhang the outside diameter of the inner member in order to prevent damage to the elastomer.
3. Apply pressure to the driving device to seat the mount in its socket.
4. Assemble the other elements of the support, insert the mount bolt and tighten to the required torque. When the nut is tightened against the snubbing washer, the rebound shoulder is formed automatically. The resulting pre-compression assures optimum performance.